

Acid Decapsulation System

iSA707/777DC™ model



All non-DC brands products, processes and trademarks mentioned or illustrated in this brochure remain the property of the respective owners. Data contained in this document can change at any time. Consult Digit Concept or Representative for latest information

Release : R2021_3.9

CONFIDENTIAL

Page 1 / 6

FUNCTIONALITIES OF THE iSA707/777DC™

MAIN CHARACTERISTICS

- **Electronic Control Unit** with a **iPanel™** user interface and an **Intuitive** software
- **Compatible** Nitric Acid / Sulfuric Acid / Mixed Acid / **Ki+I2** & Nitric Acid
- iSA707 Acid temperature range: **Ambiant+5°C to 250°C** (*1)
- iSA777 Acid temperature range: **10°C to 100°C** (*1)
- Improved Chamber **Pressure Sensor** System
- New **Nozzle Detector** Module
- **Metal** Etch Head
- **New bottles holder** bottles of 500mL or **1L** (2 acids + 1 waste). No need to fill an other bottle. Use the one you receive from your supplier.
- Compatibility with Gaskets and kits
- **2 years' warranty** (excluding travel expenses)
- CE Certificate

OPTIONS

- Bonding Detection by **Acid Polarization**

ADVANTAGES OF THE iSA707/777DC™

- **iPanel™** user interface: This new **friendly and intuitive** user interface is equipped with an IP67 protective box and a Tempered-Glass Screen Protector.
- Improved **Electronic Control Unit**: More robust connector vs acid vapor and corrosion
- **New Acid pump**: this new improved pump is compatible with Nitric Acid / Sulfuric Acid / Mixed Acid / **Ki+I2** & Nitric Acid
- **Metal Etch Head** for a better thermal transfer
- **Optimized Pressure Chamber**: no more "Check Cover" message thanks to a new management of the pressure inside the chamber.
- **New Nozzle Detector**: no more "Device is present" induce by defective opto-coupler. Assembly has been made more reliable.
- All systems are now equipped with a **3 bottles holder** compatible with 500 ml and **1000 ml bottles** in standard: 2 acids + 1 waste.

OPTIONS

Bonding Detection by **Acid Polarization** allows to indicate when wires are reached but also for Cu protection.

FUNCTIONALITIES OF THE iPANEL™

- Fast & Intuitive operations and controls screen (see example below)



APPLICATION EXAMPLES OF THE iSA707/777

Key applications of the iSA777 are multiple:

- Full Decapsulation: die, stitch or both
- Decapsulation of small package
- Decapsulation without destruction of Al, Au, Cu, or Ag bond wires
- Decapsulation of Hybrid Module

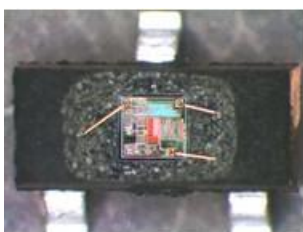


Figure 5: Small Package

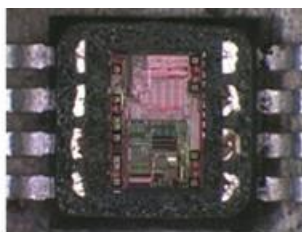


Figure 5: Au Wires Die & Stitch
decap



Figure 5: Al Wires D2pack



Figure 5: AsGa



Figure 5: Cu Wires



Figure 6: Ag Wires

SPECIFICATION

iSA777DC™

General Specification	
Dimensions (incl. bottles holder) - WxDxH	350 x 460 x 490 mm
Weight	~25 Kg
Power Source	90 - 250 VAC / 49-61 Hz
Power consumption	550 W max
Acid Temperature Range	10 – 250°C
Acid Temperature Precision	1.0°C +- 1% of setting
Cooling	By air
Compressed air	4.1 bar (min 4.1 – max 6.5 bar)
Operational Specification	
Acid choice	HNO ₃ , H ₂ SO ₄ , Mixed acids, Ki+I2-HNO ₃
Acid temperature (<i>707 limited at Ambient+5°C for lower temperature – 777 limited at 100°C</i>)	HNO ₃ : 10 – 80°C HNO ₃ + KiI2: 10 – 80°C H ₂ SO ₄ : 10 – 250°C Mixed acids: 10 – 90°C
Acid flow	2-6 ml/min if temp. > 100°C 2-8 ml/min if temp < 100°C
Etch times	1 to 2400 sec
Etch modes	Normal - HE
Programs	100
Recommended Environmental Specification	
Operating temperature	20°C – 24°C
Storage temperature	10°C – 45°C